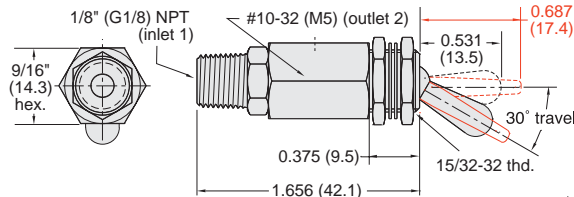
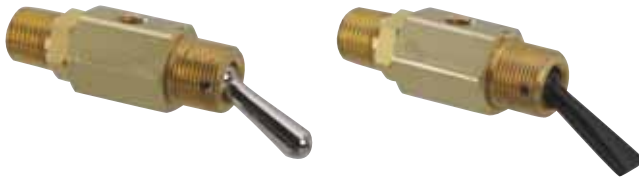


## 2 Position N.C. Spool w/Momentary Actuation



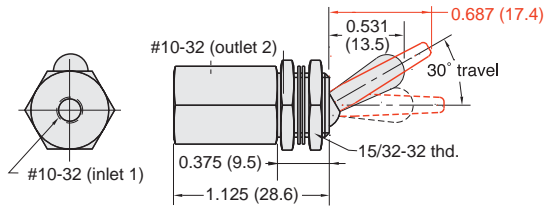
**Input Pressure:** 150 psig max.

**Air Flow:** 4.0 SCFM @ 50 psig; 6.8 SCFM @ 100 psig



Part No.	Description
TV-2MP	. . . 2 Position Spool Valve, NP Brass Toggle, 1/8" NPT
TV-2MFP	. . . 2 Position Spool Valve, Plastic Toggle, 1/8" NPT

## 2 Position N.O. Poppet w/Momentary Actuation



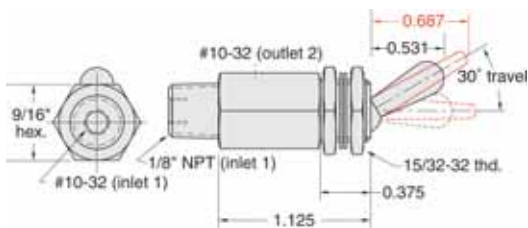
**Input Pressure:** 150 psig/10 bar max

**Air Flow:** 4.5 SCFM @ 50 psig; 8.0 SCFM @ 100 psig;  
190 l/min @ 6 bar



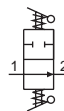
Part No.	Description
TVO-2M	. . . 2 Position N.O. Poppet Valve, NP Brass Toggle, #10-32
TVO-2M-M5	. 2 Position N.O. Poppet Valve, NP Brass Toggle, M5
TVO-2MF	. . . 2 Position N.O. Poppet Valve, Plastic Toggle, #10-32
TVO-2MF-M5	2 Position N.O. Poppet Valve, Plastic Toggle, M5

## 2 Position N.O. Poppet with Momentary Actuation



**Input Pressure:** 150 psig max.

**Air Flow:** 4.0 SCFM @ 50 psig; 6.8 SCFM @ 100 psig



Part No.	Description
TVO-2MP	. . . 2 Position Toggle Poppet Valve, NP Brass Toggle
TVO-2MFP	. . . 2 Position Toggle Poppet Valve, Plastic Toggle

**Did you know...**



Clippard was the first to use the #10-32 threaded port for Miniature valves, cylinders, and fittings which continues to be the industry standard today.